

Remote Support Made Simple

A unified management layer orchestrating [Tailscale VPN](#) and [RustDesk remote desktop](#). We bring two world-class open-source tools together into one simple experience for IT support teams and their clients.

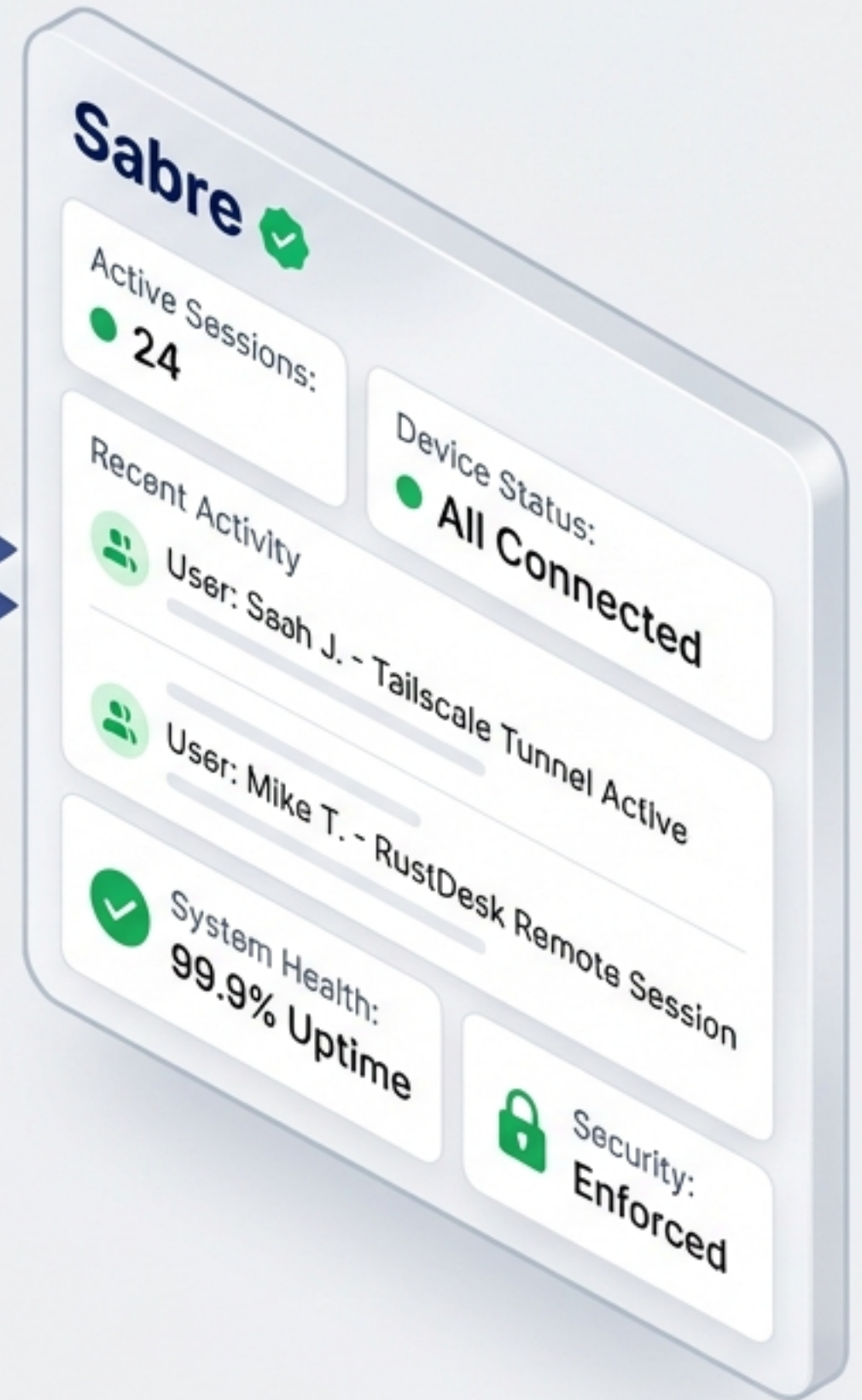
Trusted by support teams across **South Africa and the SADC region.**



Tailscale



RustDesk

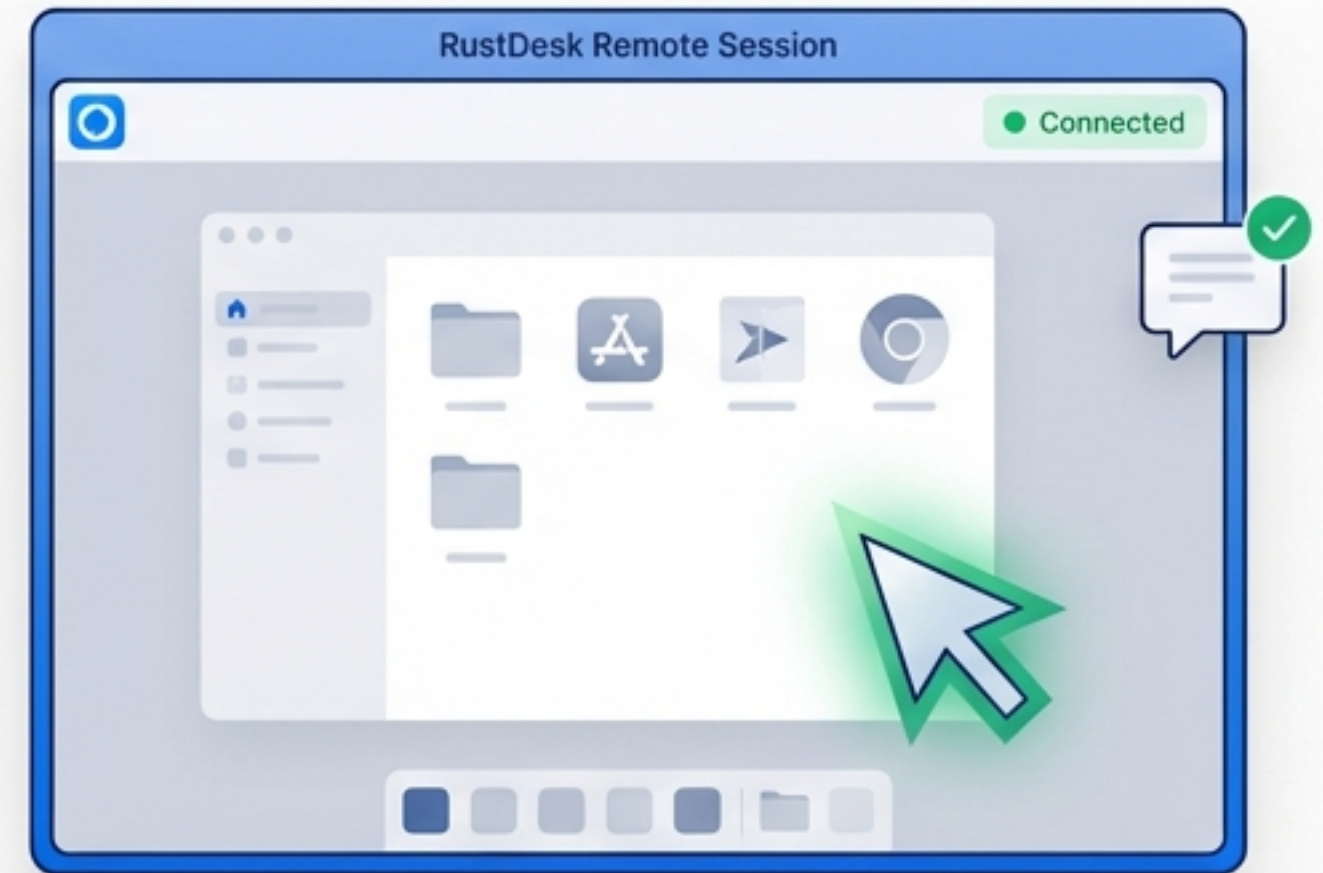


Powered by World-Class Open Source



Tailscale (Private VPN Network)

Creates a secure, encrypted mesh network using WireGuard®. Every device gets a private IP address — no port forwarding, no firewalls, no complicated setup.

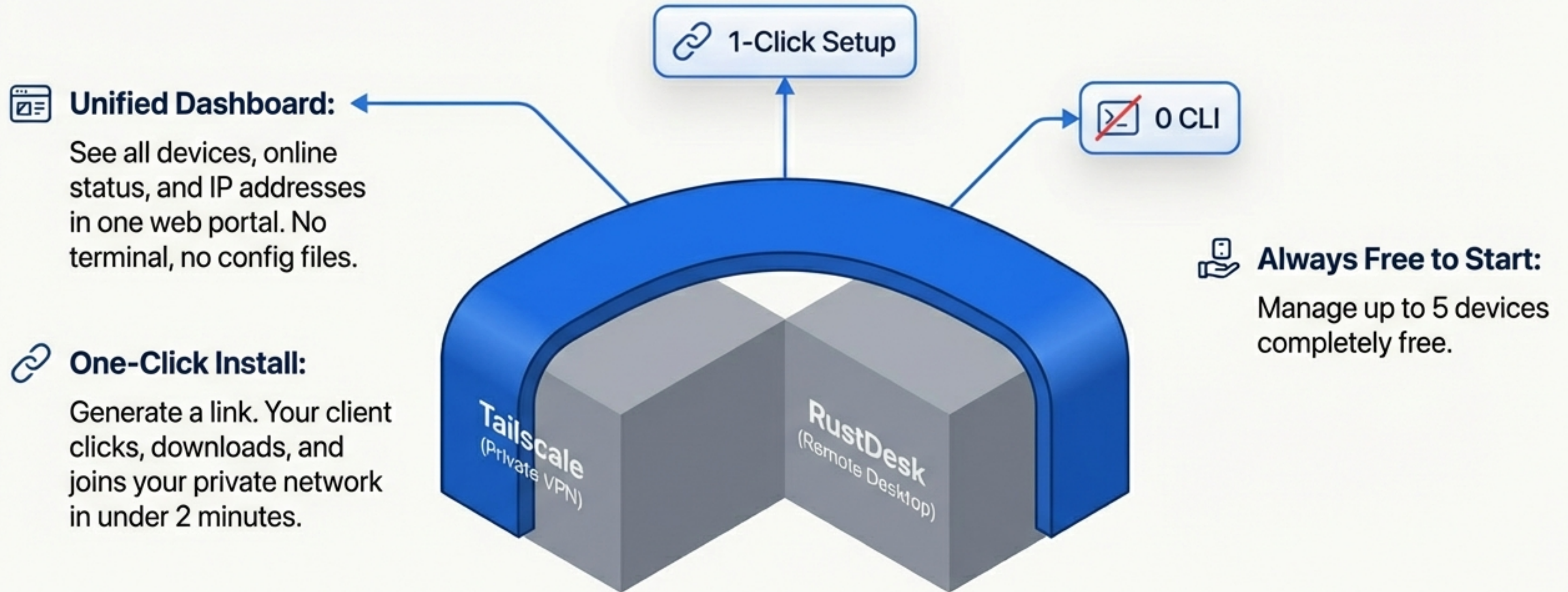


RustDesk (Remote Desktop Access)

A full-featured open-source remote desktop application. See your client's screen, transfer files, chat — all running peer-to-peer over the Tailscale network.

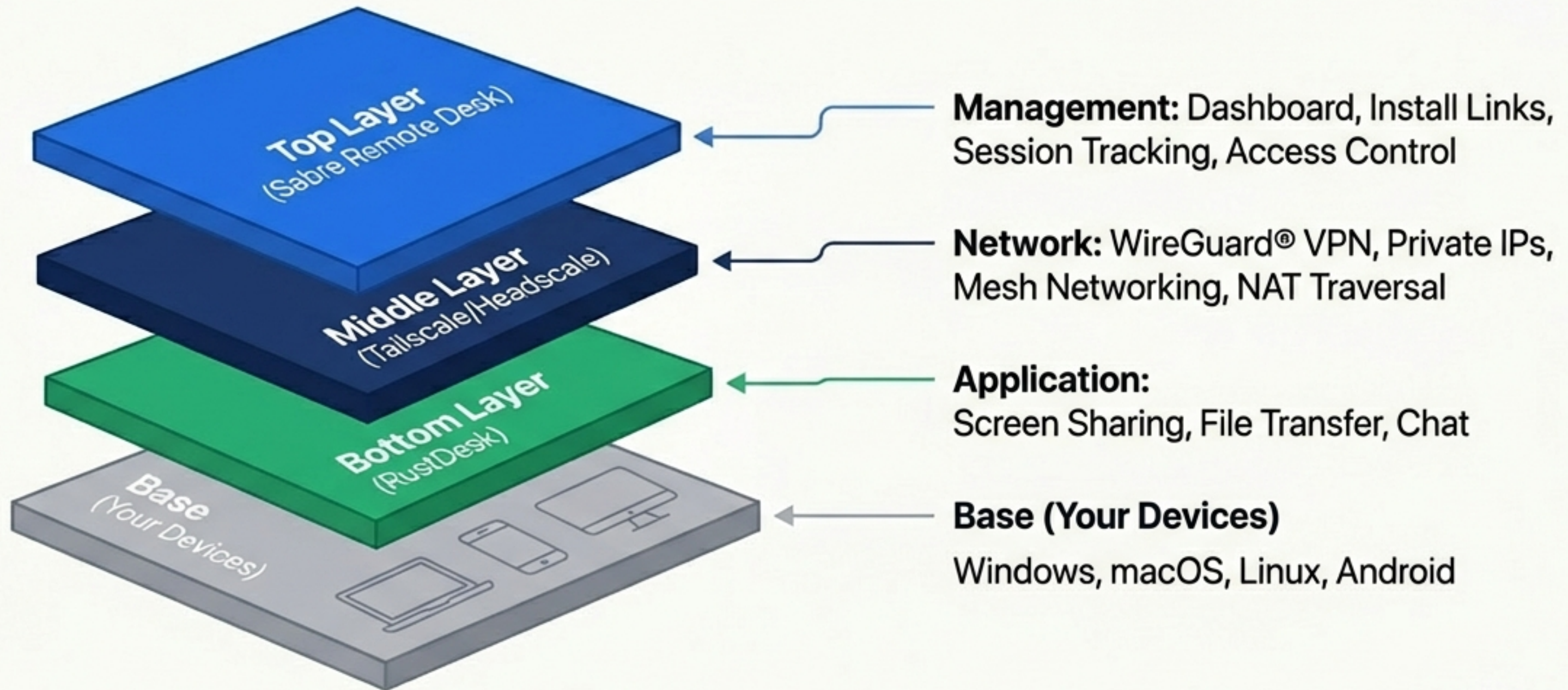
The Simple Layer on Top

Tailscale and RustDesk are powerful — we make them easy for support teams and their clients.



How the Pieces Fit Together

Three distinct layers working together to deliver secure, simple, and scalable remote support without the proprietary bloat.



Up and Running in Under 5 Minutes

Three simple steps to onboard clients and start supporting them instantly.



1. Send Install Link

Generate a one-click PowerShell-based link from your dashboard. Send via email, WhatsApp, or SMS.



2. Client Joins Network

The client opens the link, downloads the agent, and enters the unique enrollment key. Tailscale and RustDesk install automatically.



3. Connect & Support

The device instantly appears in your dashboard with its Tailscale IP. Click "Connect" to launch encrypted remote desktop access.

Built for MSP Operations

A unified, secure portal designed to streamline support, billing, and compliance across multiple client environments.

Multi-Client Organisation: Manage 10 to 50+ clients from a single portal. Clean separation and isolated device groups for each client environment.

Session Tracking & Audit Trails: Automatically log every session. Track start/end timestamps, durations, which technician connected, and session notes.

Essential for Billing: Export granular audit trails for accurate per-hour support billing and strict compliance reporting.

The screenshot displays the MSP Operations portal interface. On the left is a dark blue sidebar with navigation options: Dashboard, Clients, Devices, Sessions, Reports, and Settings. The main content area is titled "Multi-Client View" and features a search bar and a table of client devices. The table has columns for Client Name, Known As (Alias), Device ID, Status, and Last Session. Three rows are visible, all with "Online" status. To the right, a "Session History Logs" panel is open, showing details for two sessions. The first session (S-29384) was performed by Sarah J. on 2023-10-27, lasting 30m 15s, with notes about routine maintenance. The second session (S-29383) was performed by Mark L. on the same day, lasting 45m 15s, with notes about a software update.

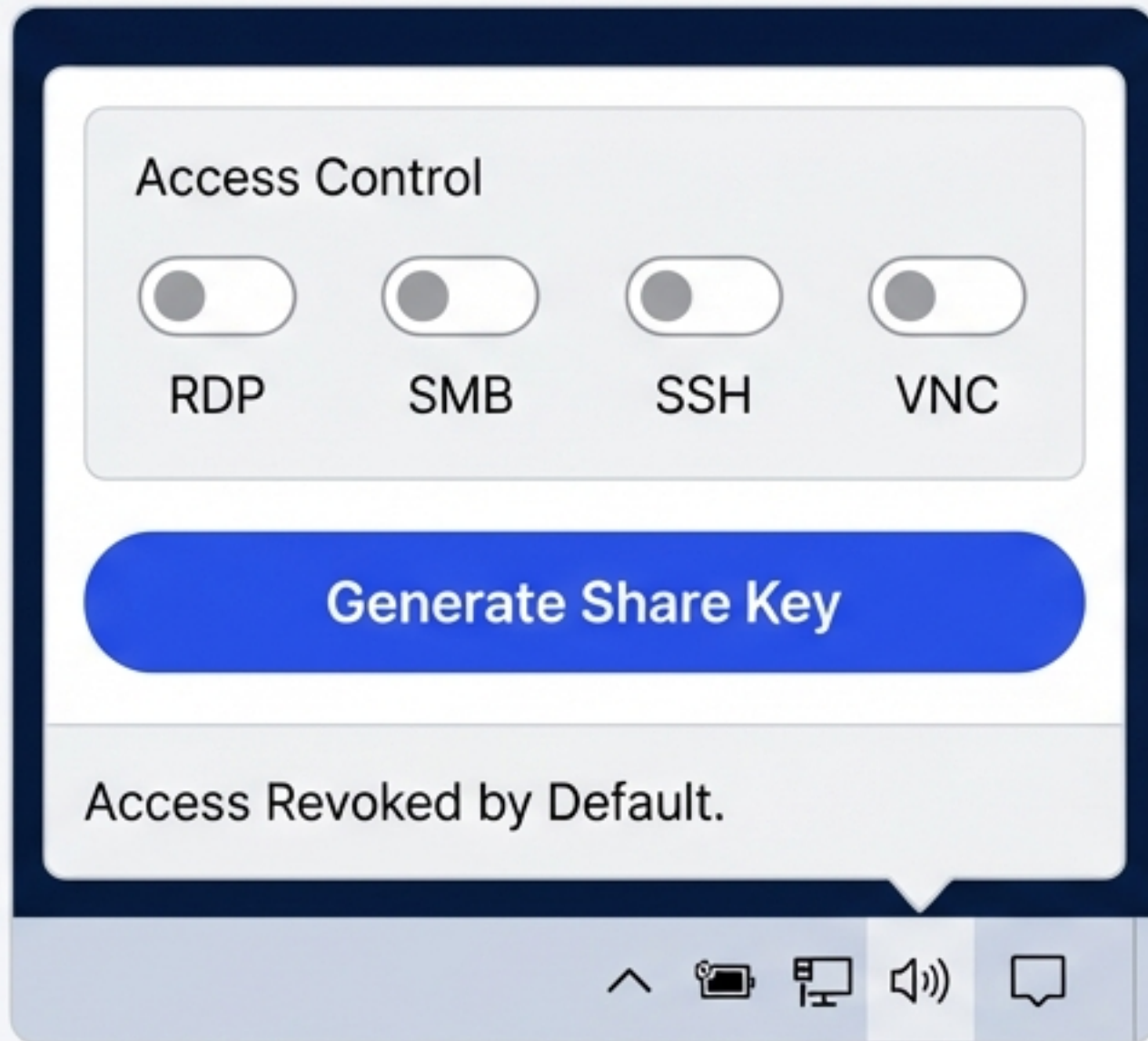
Client Name	Known As (Alias)	Device ID	Status	Last Session
Acme Corp	CEO Laptop	AC-CEO-01	Online	Today, 10:30 AM (30m)
Beta Industries	Server Rack 1	BI-SRV-001	Online	Yesterday, 4:45 PM (1h)
Gamma Services	Office Desktop 3	GS-OSK-603	Online	Today, 9:00 AM (45m)

Session History Logs

Client: Acme Corp

- Session ID: S-29384**
Tech: Sarah J.
Start: 2023-10-27 10:30:15
End: 2023-10-27 11:00:30
Duration: 30m 15s
Notes: Routine maintenance.
- Session ID: S-29383**
Tech: Mark L.
Start: 2023-10-27 09:00:65
End: 2023-10-27 09:45:20
Duration: 45m 15s
Notes: Software update.

Client-Side Control and Security



Default-Deny Firewall: Nothing is open until explicitly allowed. End users control per-service toggles for RDP, File Sharing (SMB), SSH, and VNC.

Share Key Access Exchange: Clients right-click their tray icon to generate a unique key. They share this with support — no accounts, no passwords.

Revocable Access: Clients grant access when they need help and revoke it instantly when the session ends. IP-based whitelisting ensures strict access control.

Automated Cross-Platform Deployment



Windows (10/11):

1-Click

Fully automated one-click installer for Tailscale + RustDesk.



macOS (12+ Intel & Apple Silicon):

Automated

Supported via DMG installer.



Linux (Ubuntu, Debian, Fedora, Arch):

Automated

Supported via Appliance / package.



Mobile:

App Store

Android (8.0+) via Play Store.
iOS support available via App Store.

**Note: Manual separate installation of Tailscale and RustDesk is always an option, with Sabre serving as the web management dashboard.*

Enterprise-Grade Security and Sovereignty



Network Layer



WireGuard® 256-bit encryption on a zero-trust mesh network. All traffic is peer-to-peer (P2P); your data never touches our servers.

Application Layer



Session-based Sabre Identity SSO, API auth middleware, and unique enrollment tokens.



Self-Hosted Option

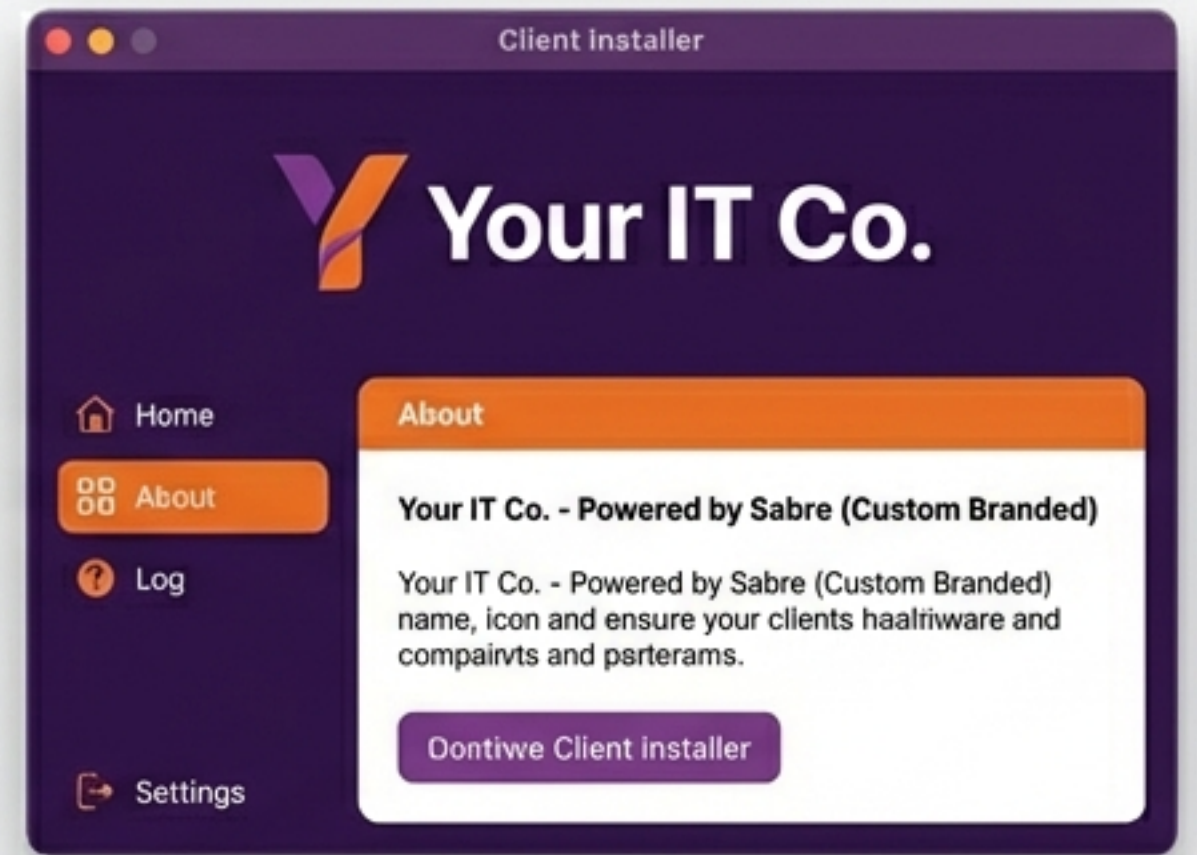
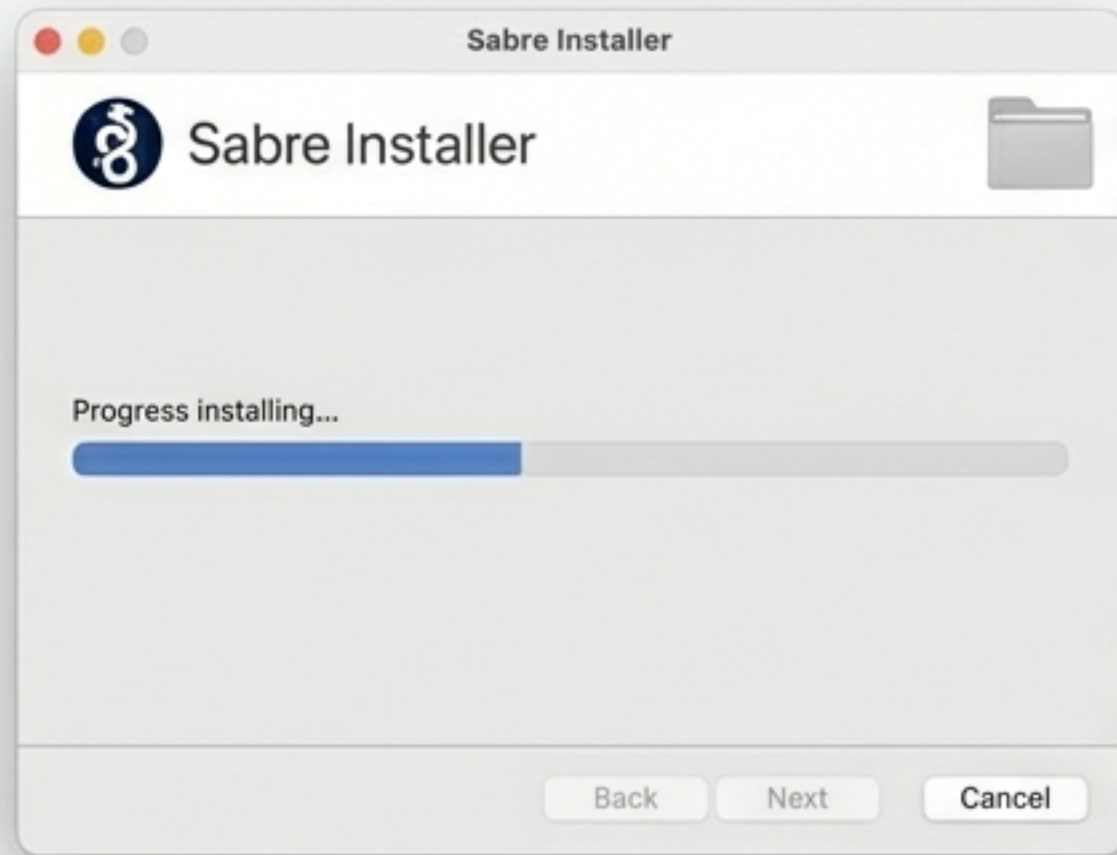


Run the entire control plane on your own infrastructure using Headscale and a custom Node.js server. Ultimate data sovereignty for finance, healthcare, and government compliance.

Escaping the Proprietary Black Box

Feature	Proprietary Legacy Tools	Sabre Remote Desk
Technology	Proprietary Black Box	Proven Open Source (RustDesk/Tailscale)
Network Layer	Routed via their servers	WireGuard® P2P Direct Connection
Device Limits	1 free device with timeouts	5 Free Devices, zero limits
Data Sovereignty	Locked in their cloud	Your own infrastructure
White-Labeling	Not available	Full brand control
Pricing	€14–25/month	Starting at ~R79/month

Brand It. Package It. Sell It.



Full White-Labeling:

Your logo, your colours, your app name. Clients never see "Sabre" — it is entirely your product.

Custom Installers:

Branded executable installers featuring your company name, icon, and custom "About" page text.

Wholesale Margins:

Enjoy a 30% partner discount on all tiers. Set your own retail pricing, manage your clients through the partner dashboard, and keep the margin.

Simple, Transparent Pricing

Tailscale and RustDesk are free. You only pay for the management layer.

16% discount on yearly billing

Free

- 🖥️ 5 devices.
- ✅ Tailscale + RustDesk, session tracking.

Basic

R79/mo

- 🖥️ Up to 25 devices.
- ✅ Multi-client management, email support.

Professional

R239/mo

- 🖥️ Up to 100 devices.
- ✅ Full audit trail, priority support, white-label branding.

Enterprise

Custom

- 🖥️ Unlimited devices.
- ✅ Self-hosted (Headscale), custom installer build, SLA guarantee.

(International pricing available in USD, GBP, EUR, AUD, etc.)

Start Streamlining Your Support Today

Get Started:

Remote support doesn't have to be complicated or expensive. Launch your free 5-device dashboard today at remote.sabreproducts.com

Direct Contact:

sales@sabreproducts.com | WhatsApp: +27 83 805 6861

Regional Support Desks:

KZN: +27 31 101 3044

JHB: +27 11 461 6385

CPT/PE: +27 41 111 0010

EL: +27 43 111 0189